



*Serving and empowering persons with developmental disabilities.*

# Fall 2011 Newsletter

## Grant Status Update



have received a \$450,000 grant from the Topeka Federal Home Loan Bank to go toward the building.

We have received two grants from the AIM Institute, a collaboration of local, state and regional businesses, area colleges and universities, secondary school districts, the Greater Omaha Chamber of Commerce and the State of Nebraska.

We have the design expertise of Green Bellevue and the University of Nebraska architectural school in creating as close to a sustainable residential facility as possible.

We have received a \$15,000 grant from FOCUS North America, the national charitable arm of the combined Orthodox Christian Churches.

We are awaiting the announcement of a \$1.3 million grant from the Department of Housing and Urban Development to complete building the community of ten residential units and one live in managers unit.

We still need your help in providing for the common area furnishings and shared kitchen ware, landscaping, cherry trees along Galvin Road and raised bed gardens in the courtyard, an activity room and most importantly a small chapel which will not be covered by the building grants.

With deep gratitude we thank you for helping to make this dream a reality.

Thank you for your donations and compassion for those with developmental disabilities. The vision of Sheltering Tree is in sight. We have a two acre site located at 101 Galvin Road South, Bellevue, NE. We

### Patron Day September 14th

The Elevation of the Holy Cross is Sheltering Tree's Patron Day.

*Icon Donated to Sheltering Tree*



## Future Residents Get Together



We had a dinner this summer at Immanuel Lutheran Church across the street from the future site of the Sheltering Tree residential community.



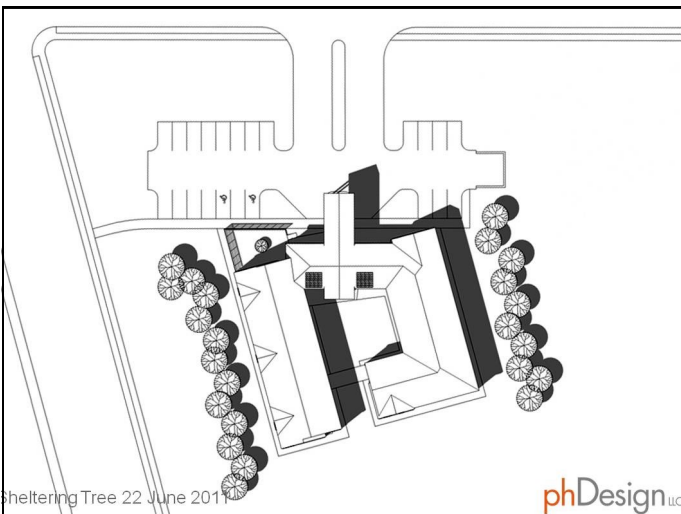
It was a great time for the future residents of Sheltering Tree and families to get to know each other a little more over a great dinner.



The Site Design for the 101 Gavin Rd South location was also presented by pH Design.

It's exciting to see a sense of community developing.

## Design of Sheltering Tree



Sheltering Tree 22 June 2011



## 2nd Annual Golf Tournament a Success!

This June was our second annual golf tournament and we raised several thousand dollars!



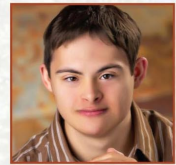
"I am David. I like to do things with my brother, Dan. We go to Barnes and Noble and to movies. Dan helps me on the computer. I like to shoot hoops and read the newspaper. I like to watch football with Father Kizito. I like old TV shows. I like going to Mass by myself at 11:30."

Only with your help can David continue this wonderful life after his parents are gone and his brother can no longer care for him.



"My name is Grace. I play baseball, basketball and soccer. I go to Millard North where I am the basketball and track manager. I like to help a team because they are my friends and important to me. In the future, like my brother and sister, I would like to live on my own."

With your support, Grace can realize her dream to live independently and continue to enjoy her active role in the community!



"My name is Mike. I like comic books. I want to write my own. I want to be an artist. I like playing video games and watching movies. I like playing with my two dogs, Emma and Elsie. I want to write a book called, "Helping Us: We are Kids a friendship guide."

If you join us, Mike's future will be bright. He will be supported in his talents and hobbies – something we all enjoy!



Sheltering Tree Multi-Family Residence  
Main Entrance